



# 2023 catalogue Mobile obstacles



Hydrostadium  
22 avenue des Vieux Moulins  
74000 ANNECY

**Contact us:**

☎ 04 56 41 21 66

✉ [dev@hydrostadium.fr](mailto:dev@hydrostadium.fr)

🌐 [www.hydrostadium.com](http://www.hydrostadium.com)

## Products

Omniflotts®	p.2
Inserts	p.3-5
Bottom obstacles	p.6
Omnipass	p.7
Tools	p.8

▶ Products designed and manufactured in France

Set up your river in the blink of an eye !

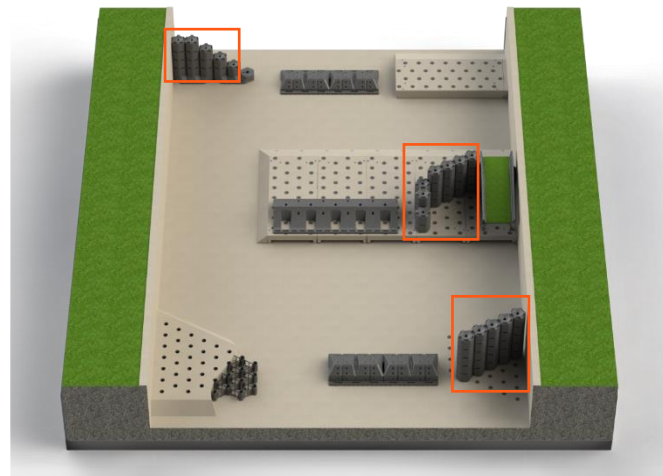


### 5 different heights

32 – 64 – 96 – 128 – 160 (centimeters)

### Ergonomic

Can be handled by a single person.



### Ground locking system: SVO

The central tube is fitted with a key-operated ground fixing system (ref 000044).



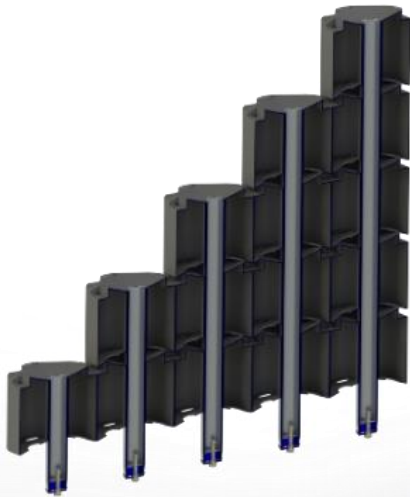
### Several colors available

The plastic part is available in different colors, the basic color being gray.



### Light and strong

The aluminum structure guarantees the sturdiness of the obstacle, while the hollow plastic modules reduce the overall weight.



Accessory: Top tube cap



Ref 000 019

Weight: 8,3 kg  
Width: 40 cm  
Total height: 52 cm  
Useful height: 32 cm



**Omniflotts® 32**

Ref 000 028

Weight: 14.6 kg  
Width: 40 cm  
Total height: 84 cm  
Useful height: 64 cm



**Omniflotts® 64**

Ref 000 029

Weight: 21.2 kg  
Width: 40 cm  
Total height: 116 cm  
Useful height: 96 cm



**Omniflotts® 96**

Ref 000 030

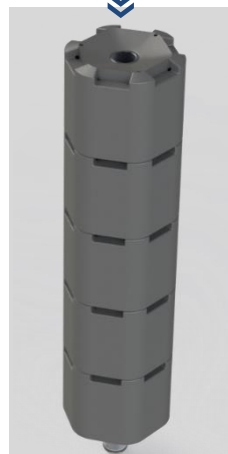
Weight: 28.2 kg  
Width: 40 cm  
Total height: 148 cm  
Useful height: 128 cm



**Omniflotts® 128**

Ref 000 031

Weight: 35.6 kg  
Width: 40 cm  
Total height: 180 cm  
Useful height: 160 cm



**Omniflotts® 160**

Ref 000 032

Set up your river in the blink of an eye !



# Insert I

Pre-casted = modularity



**Insert cap**  
Ref 000 045

## Safety

The insert cap smooths the bottom of your river when there are no obstacles installed in the insert.



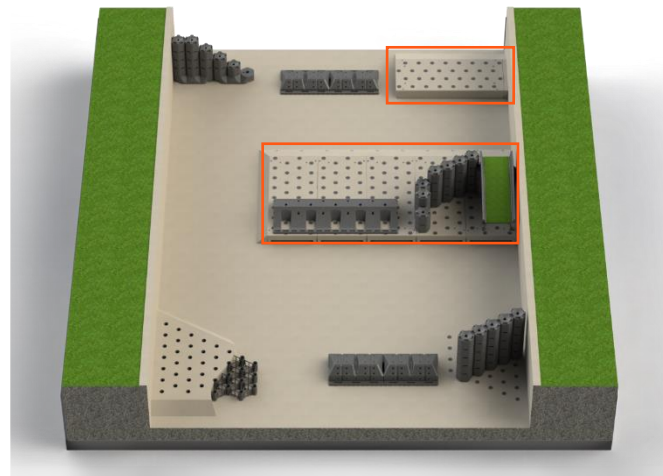
**Insert I**  
Ref 000 033

## Practical

Allows an optimum support of the Omniflots® in the river.

## Self-cleaning

Insert I is through-going, enabling automatic cleaning from the bottom.



## Clever

With the purchase of Insert I, especially for international projects, pre-casted slabs drawings can be supplied for on-site manufacturing.

**Weight: 500 kg**  
**Width: 42 cm**  
**Height: 180 cm**  
**Depth: 145 cm**



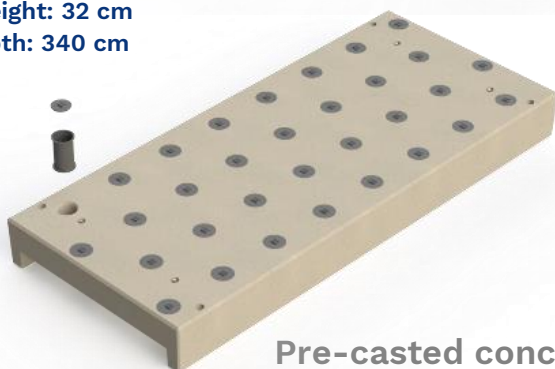
## Ready to use

The pre-casted concrete structure integrates Inserts I with an adapted layout. It is laid on the banks of the river to accommodate obstacles on a slope of 3:2 (150%). Other slopes available on request. Integrated handling system.

## Angle concrete slab

Ref 000 062

**Weight: 2200 kg**  
**Width: 140 cm**  
**Height: 32 cm**  
**Depth: 340 cm**



## Pre-casted concrete slab

Ref 000 034

## Ready to use

The pre-casted concrete structure integrates Inserts I with an adapted layout. It is fixed to the bottom of the river to accommodate obstacles and can be moved according to your wishes. Integrated handling system.

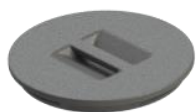
Set up your river in the blink of an eye !

# Insert II

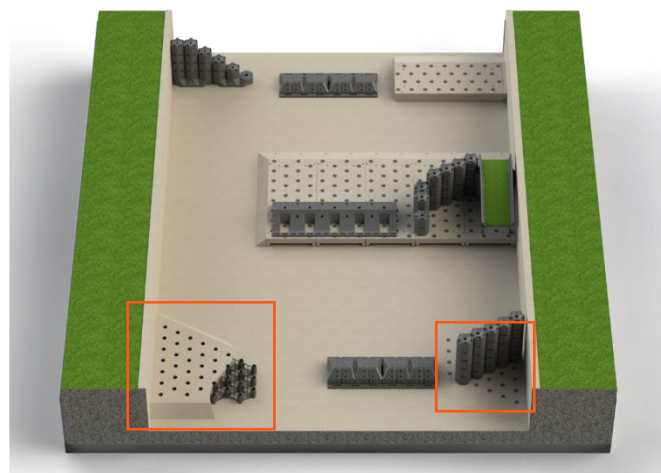
Built-in the riverbed

## Safety

The insert cap smoothes the bottom of your river when there are no obstacles installed in the insert.



**Insert cap**  
Ref 000 045



## Modularity

Insert II lets you choose the number of inserts, as well as the geometry of the layout.



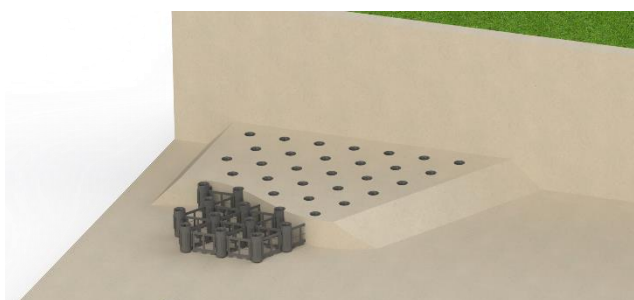
**Insert II Cylinder**  
Ref 000 035

**Insert II Bars**  
Ref 000 036



## Easy

The bars allow the inserts to respect the correct layout when the concrete is poured on-site.

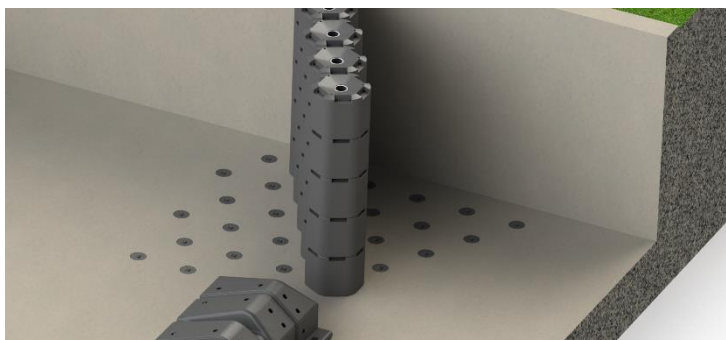


## Overlay use

It is possible to directly pour the concrete for Inserts II onto the riverbed.

## Smooth riverbeds

Inserts II can be integrated directly into the riverbed by providing reservations during the civil work.



Set up your river in the blink of an eye !

# Insert IV

For even greater flexibility

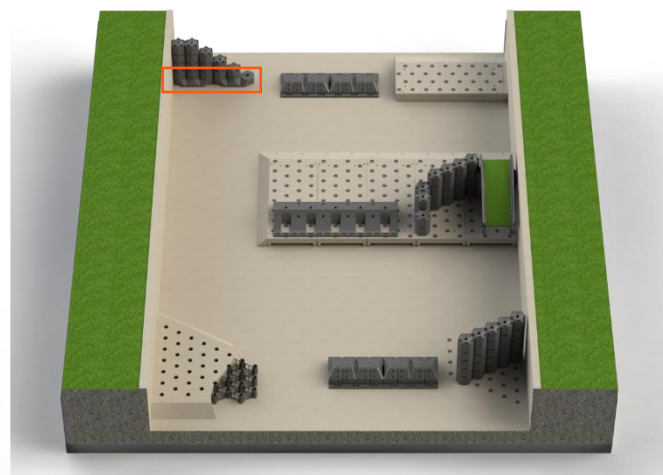
Weight: 55 kg  
Width: 57 cm  
Height: 24 cm  
Depth: 121 cm



## Insert IV

Ref 000 039

(Sliding scale price according to quantity)



### Adaptability

Insert IV allows whitewater rivers not equipped with Insert I or II system, to benefit from the modularity of our Omniflotts® obstacle technology.

### Security

Round shapes and plastic material guarantee the safety of river users even if hitting the obstacle.

### Compatibility

Thanks to its multiple oblong holes, Insert IV can be fixed in any position on a riverbed equipped with Unistrut® rails or on a smooth riverbed.



### Compliance

Insert IV is suitable for all Omniflotts® sizes if equipped with an SVO locking system.



### Several colors available

The plastic part is available in different colors, the basic color being gray.



Set up your river in the blink of an eye !

# Bottom obstacles

To create beautiful water movements

## Bottom obstacle 30

Ref 000 040

Weight: 19 kg  
Width: 105 cm  
Height: 30 cm  
Depth: 147 cm

### Security

Round shapes and plastic material guarantee the safety of river users even if hitting the obstacle.

### Compatibility

These obstacles are screwed directly onto the riverbed, so they can be placed anywhere.

Weight: 25 kg  
Width: 105 cm  
Height: 45 cm  
Depth: 147 cm

## Bottom obstacle 45

Ref 000 041

## Half-drop obstacle

Ref 000 043

Weight: 25 kg  
Width: 70 cm  
Height: 32 cm  
Depth: 136 cm

### Easy installation

Half-drop obstacle is equipped with the same tube as Omniflotts® enabling an additional attachment to the riverbed.

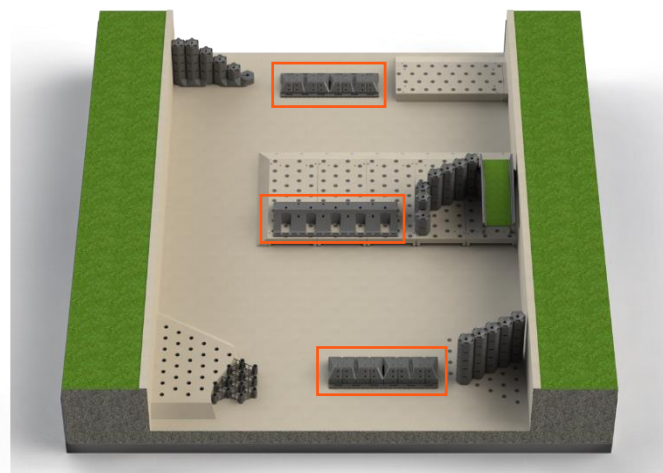
**Ideal for the modeling of freestyle water movements.**

### Several colors available

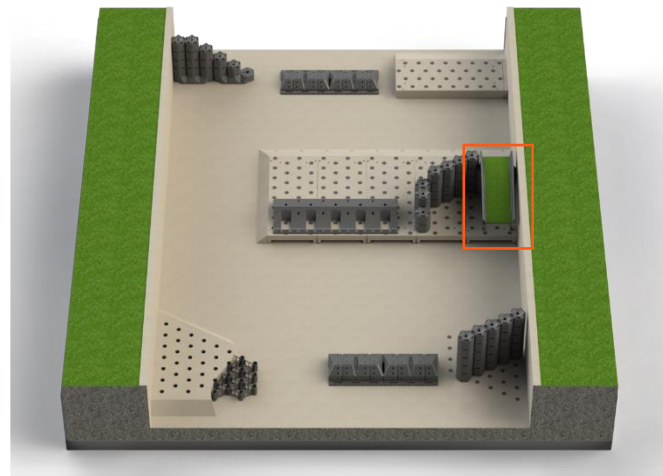
The plastic part is available in different colors, the basic color being gray.



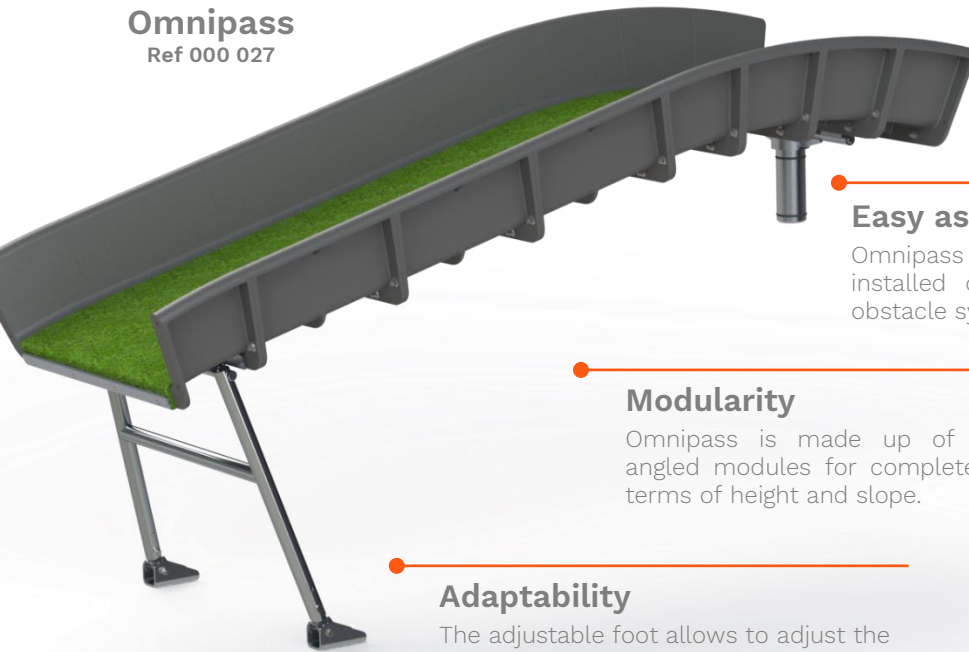
Set up your river in the blink of an eye !



## 2023 INNOVATION



**Omnipass**  
Ref 000 027



### Easy assembly

Omnipass rest directly on an Omniflots®, but can also be installed on other supports on request (riprap, other obstacle systems, etc.).

### Modularity

Omnipass is made up of straight and angled modules for complete flexibility in terms of height and slope.

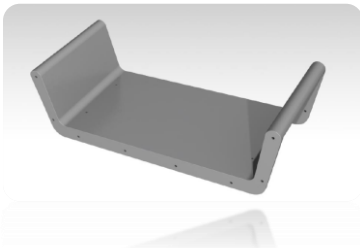
### Adaptability

The adjustable foot allows to adjust the slope by modifying the length. It is screwed to the riverbed.

**Weight: 55 kg**  
**Width: 80 cm**  
**Height: adjustable**  
**Length: adjustable**

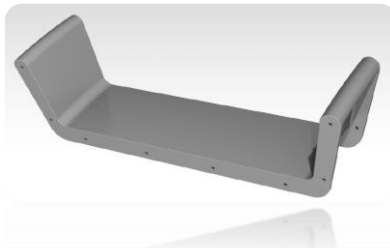
The basic kit includes:

**3 straight modules**



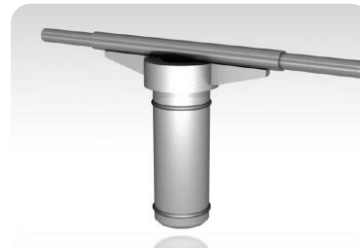
Ref 000 008

**5 angle modules**



Ref 000 007

**1 Omniflots® adapter**



Ref 000 001

**1 foot**

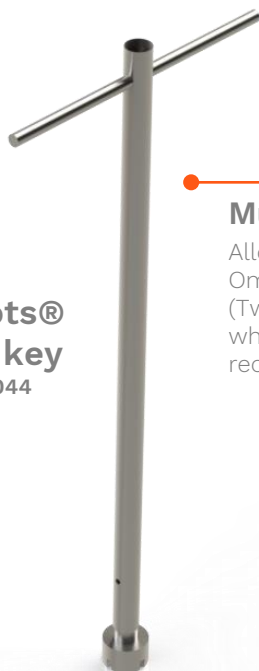


Ref 000 004

**As well as all stainless steel screws + covering .**

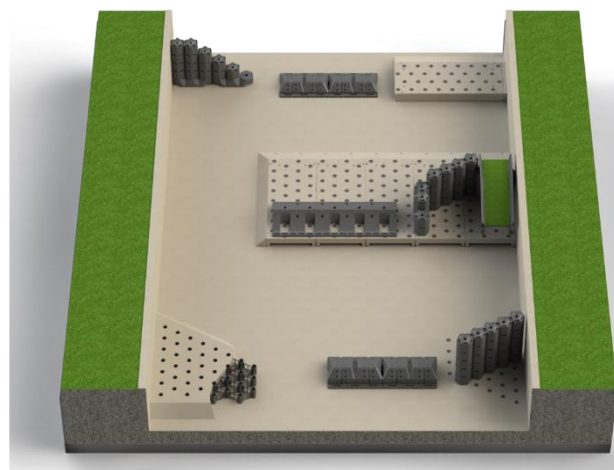
## Omniflotts® locking key

Ref 000 044



### Must-have

Allows you to lock the Omniflotts® in the inserts (Two locking keys per whitewater river are highly recommended).



## Omniflotts® cap removal handle

Ref 000 060



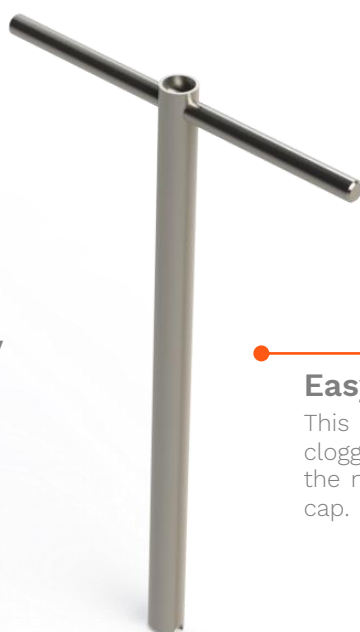
### Easy

Allows you to remove the top tube cap from Omniflotts® tube (réf 000 019).

## 2023 INNOVATION

## Insert cap key

Ref 000 050



### Easy

This key allows you to remove the clogged insert cap. It also eliminates the need to bend down to remove the cap.